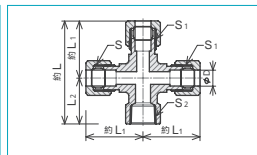
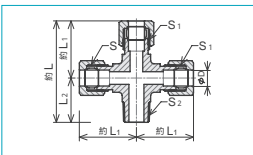
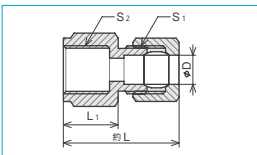
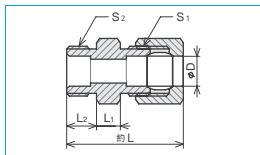


リングジョイント



RGMおねじコネクタ

RGFめねじコネクタ

RMXおねじクロス

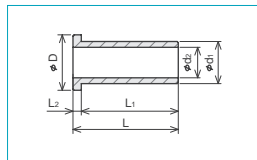
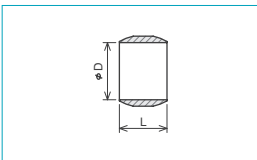
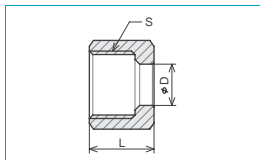
RFXめねじクロス

| 呼称 D × S ₂ | 品番 | 価格 | 約L ₁ | L ₂ |
|--------------------------|-----------|-------|-----------------|----------------|
| 3 × 1/8 | RGM-03818 | 436 | 25.5 | 6.5 |
| 4 × 1/8 | RGM-04818 | 440 | 25.5 | 6.5 |
| 5 × 1/8 | RGM-05818 | 440 | 25.5 | 6.5 |
| 6 × 1/4 | RGM-06828 | 576 | 32.5 | 8.5 |
| 8 × 1/4 | RGM-08828 | 584 | 32.5 | 8.5 |
| 10 × 3/8 | RGM-10838 | 705 | 38 | 10 |
| 12 × 1/2 | RGM-12848 | 1,055 | 46 | 12 |
| 14 × 1/2 | RGM-14848 | 1,073 | 47 | 12 |
| 15 × 1/2 (5/8) | RGM-15858 | 1,335 | 51 | 13 |
| 16 × 1/2 (5/8) | RGM-16858 | 1,345 | 51 | 13 |
| 1/8 × 1/8 | RGM-81818 | 436 | 25.5 | 6.5 |
| 1/4 × 1/4 | RGM-82828 | 576 | 32.5 | 8.5 |
| 3/8 × 3/8 | RGM-83838 | 776 | 39 | 10 |
| 1/2 × 1/2 | RGM-84848 | 1,065 | 47 | 12 |
| 5/8 × 1/2 (5/8) | RGM-85858 | 1,345 | 51 | 13 |

| 品番 | 価格 | 約L ₁ | L ₁ |
|-----------|-------|-----------------|----------------|
| RGF-03818 | 404 | 26 | 12 |
| RGF-04818 | 408 | 26 | 12 |
| RGF-05818 | 408 | 26 | 12 |
| RGF-06828 | 548 | 33 | 15 |
| RGF-08828 | 556 | 33 | 15 |
| RGF-10838 | 752 | 39 | 19 |
| RGF-12848 | 1,128 | 46 | 22 |
| RGF-14848 | 1,148 | 47 | 22 |
| RGF-15848 | 1,404 | 49 | 22 |
| RGF-16848 | 1,416 | 49 | 22 |
| RGF-81818 | 404 | 26 | 12 |
| RGF-82828 | 548 | 33 | 15 |
| RGF-83838 | 752 | 40 | 19 |
| RGF-84848 | 1,140 | 47 | 22 |
| RGF-85848 | 1,416 | 49 | 22 |

| 品番 | 価格 | 約L ₁ | L ₂ |
|-----------|-------|-----------------|----------------|
| RMX-03818 | 1,295 | 25 | 20 |
| RMX-04818 | 1,305 | 25 | 20 |
| RMX-05818 | 1,305 | 25 | 20 |
| RMX-06828 | 1,807 | 31 | 25 |
| RMX-08828 | 1,829 | 31 | 25 |
| RMX-10838 | 2,535 | 35 | 28 |
| RMX-12848 | 3,756 | 42 | 34 |
| RMX-14848 | 3,811 | 43 | 34 |
| RMX-15848 | 4,116 | 45 | 34 |
| RMX-16848 | 4,149 | 45 | 34 |
| RMX-81818 | 1,295 | 25 | 20 |
| RMX-82828 | 1,807 | 31 | 25 |
| RMX-83838 | 2,535 | 36 | 28 |
| RMX-84848 | 3,789 | 43 | 34 |
| RMX-85848 | 4,149 | 45 | 34 |

| 品番 | 価格 | 約L ₁ | L ₂ |
|-----------|-------|-----------------|----------------|
| RFX-03818 | 1,295 | 25 | 21 |
| RFX-04818 | 1,305 | 25 | 21 |
| RFX-05818 | 1,305 | 25 | 21 |
| RFX-06828 | 1,807 | 31 | 26 |
| RFX-08828 | 1,829 | 31 | 26 |
| RFX-10838 | 2,535 | 35 | 29 |
| RFX-12848 | 3,756 | 42 | 35 |
| RFX-14848 | 3,811 | 43 | 35 |
| RFX-15848 | 4,116 | 45 | 35 |
| RFX-16848 | 4,149 | 45 | 35 |
| RFX-81818 | 1,295 | 25 | 21 |
| RFX-82828 | 1,807 | 31 | 26 |
| RFX-83838 | 2,535 | 36 | 29 |
| RFX-84848 | 3,789 | 43 | 35 |
| RFX-85848 | 4,149 | 45 | 35 |



ARNリングナット

ARRリング

AKPピン(インサードリング)

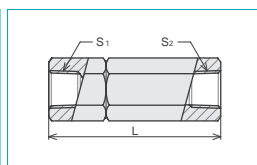
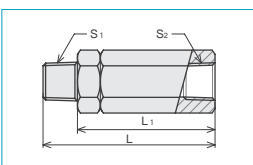
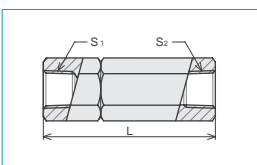
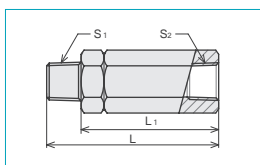
| 呼称 D | 品番 | 価格 | L |
|---------|-----------|-----|------|
| 3 | ARN-03818 | 100 | 10.0 |
| 4 | ARN-04818 | 100 | 10.0 |
| 5 | ARN-05818 | 100 | 10.0 |
| 6 | ARN-06828 | 145 | 13.0 |
| 8 | ARN-08828 | 148 | 14.0 |
| 10 | ARN-10838 | 206 | 16.0 |
| 12 | ARN-12848 | 311 | 19.5 |
| 14 | ARN-14848 | 311 | 19.5 |
| 15 | ARN-15858 | 388 | 21.0 |
| 16 | ARN-16858 | 388 | 21.0 |
| 1/8 | ARN-81818 | 100 | 10.0 |
| 1/4 | ARN-82828 | 145 | 13.0 |
| 3/8 | ARN-83838 | 206 | 16.0 |
| 1/2 | ARN-84848 | 311 | 19.5 |
| 5/8 | ARN-85858 | 388 | 21.0 |

| 品番 | 価格 | L |
|-----------|-----|------|
| ARR-03008 | 44 | 5.0 |
| ARR-04008 | 47 | 5.0 |
| ARR-05008 | 47 | 5.5 |
| ARR-06008 | 50 | 7.0 |
| ARR-08008 | 58 | 7.5 |
| ARR-10008 | 69 | 8.5 |
| ARR-12008 | 87 | 10.0 |
| ARR-14008 | 145 | 11.0 |
| ARR-15008 | 160 | 11.5 |
| ARR-16008 | 175 | 12.0 |
| ARR-81008 | 44 | 5.0 |
| ARR-82008 | 55 | 7.0 |
| ARR-83008 | 69 | 8.5 |
| ARR-84008 | 98 | 10.5 |
| ARR-85008 | 175 | 12.0 |

| 呼称 D × d ₁ | 品番 | 価格 | L | d ₂ |
|--------------------------|-----------|-----|----|----------------|
| 6.0 × 4.0 | AKP-06058 | 56 | 15 | 3.0 |
| 6.0 × 4.4 | AKP-06078 | 56 | 15 | 3.0 |
| 8.0 × 5.6 | AKP-08038 | 62 | 16 | 4.5 |
| 8.0 × 6.0 | AKP-08058 | 68 | 16 | 4.5 |
| 8.0 × 6.4 | AKP-08078 | 68 | 16 | 4.5 |
| 10.0 × 7.0 | AKP-10018 | 80 | 19 | 5.0 |
| 10.0 × 7.6 | AKP-10038 | 80 | 19 | 5.0 |
| 10.0 × 8.0 | AKP-10058 | 80 | 19 | 6.0 |
| 12.0 × 9.0 | AKP-12018 | 105 | 22 | 7.0 |
| 12.0 × 9.6 | AKP-12038 | 105 | 22 | 7.5 |
| 12.0 × 10.0 | AKP-12058 | 105 | 22 | 8.0 |
| 1/4 × 4.35 | AKP-82058 | 60 | 15 | 3.0 |
| 1/4 × 4.75 | AKP-82078 | 60 | 15 | 3.5 |
| 3/8 × 7.12 | AKP-83038 | 88 | 19 | 5.0 |
| 3/8 × 7.52 | AKP-83058 | 88 | 19 | 5.0 |
| 1/2 × 9.70 | AKP-84018 | 103 | 22 | 7.5 |
| 1/2 × 10.30 | AKP-84038 | 103 | 22 | 8.0 |

チェック継手(逆止弁)

使用圧力：最高21.0Mpa、常用14.0Mpa
 クラッキング圧力は0.05Mpaです。別仕様として0.3Mpaの製品もあります。その際は末尾品番を「9」にて注文下さい。



CSAチェック継手

CSBチェック継手

CSA(0.3MPaタイプ)

CSB(0.3MPaタイプ)

| 呼称 S ₁ × S ₂ | 品番 | 価格 | L | L ₁ |
|---------------------------------------|-----------|-------|----|----------------|
| 1/8 × 1/8 | CSA-81818 | 1,500 | 46 | 38.5 |
| 1/4 × 1/4 | CSA-82828 | 1,780 | 60 | 48.0 |
| 3/8 × 3/8 | CSA-83838 | 2,296 | 70 | 57.0 |
| 1/2 × 1/2 | CSA-84848 | 2,948 | 85 | 69.0 |

| 品番 | 価格 | L |
|-----------|-------|----|
| CSB-81818 | 1,420 | 46 |
| CSB-82828 | 1,700 | 60 |
| CSB-83838 | 2,216 | 70 |
| CSB-84848 | 2,868 | 85 |

| 品番 | 価格 | L | L ₁ |
|----------|-------|----|----------------|
| CSA81819 | 1,500 | 46 | 38.5 |
| CSA82829 | 1,780 | 60 | 48.0 |
| CSA83839 | 2,296 | 70 | 57.0 |
| CSA84849 | 2,948 | 85 | 69.0 |

| 品番 | 価格 | L |
|----------|-------|----|
| CSB81819 | 1,420 | 46 |
| CSB82829 | 1,700 | 60 |
| CSB83839 | 2,216 | 70 |
| CSB84849 | 2,868 | 85 |



1
 直動システム・関連
 ロボット・FA
 制御・検出・計測
 駆動・回転
 軸受・素材・機械
 動力伝達・伝動
 搬送・運搬
 ポンプ・送風機・粉体
 工場設備・環境