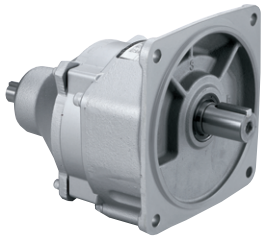


両軸形減速機

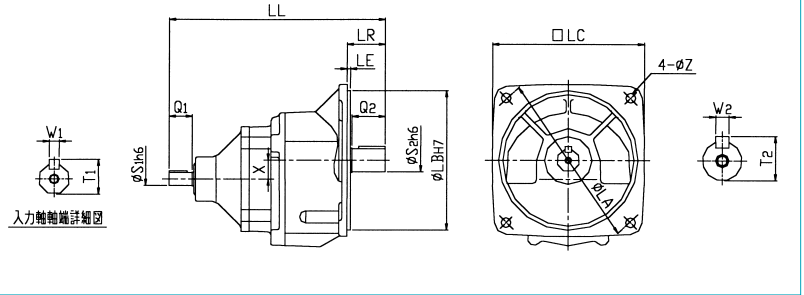
富士変速機(株)

208041



- モータ出力：0.1kW～7.5kW相当
- 減速比：1/5～1/1200

寸法図



VX-GF形 (フランジ取付形) 両軸形減速機 (0.1kW～0.75kW相当)

| 形式 | 減速比 内に入ります | 価格 VX-GF | モータ 出力 | 主要寸法 (mm) | | | | | | | | | | | | | | | | 質量kg VX-GF | | | | | |
|----------|-----------------|-------------|--------------|--------------|-------|----|-----|-----|-----|-----|------|------|----|----|------|------|----|----|------|---------------|----|----|----|------|------|
| | | | | LL | LR | LE | LA | LB | LC | Z | X | Q1 | S1 | W1 | T1 | Q2 | S2 | W2 | T2 | | | | | | |
| VX01- GF | 5 | 19,200 | 0.1kW 相当 | 198.5 | 35 | 4 | 170 | 140 | 150 | 10 | 17 | 25 | 12 | 4 | 13.5 | 28 | 19 | 6 | 21.5 | 2.5 | | | | | |
| VX01- GF | 10,15,20,25,30 | 17,600 | | 229.5 | 47 | 4 | 200 | 140 | 170 | 12 | 20 | | | | | 40 | 24 | 8 | 27 | 4 | | | | | |
| VX01- GF | 40,45,50 | 17,600 | | 317.5 | 46 | 4 | 215 | 170 | 185 | 12 | 1.8 | | | | | 42 | 28 | 8 | 31 | 14 | | | | | |
| VX01- GF | 60,80,100 | 26,500 | | 365.5 | 62 | 4 | 270 | 210 | 235 | 15 | 53 | | | | | 58 | 32 | 10 | 35 | 24.5 | | | | | |
| VX01- GF | 120,160,200 | 31,000 | | 0.2kW 相当 | 198.5 | 35 | 4 | 170 | 140 | 150 | 10 | | | | | 17 | 25 | 12 | 4 | 13.5 | 28 | 19 | 6 | 21.5 | 2.5 |
| VX01- GF | 240,300 | 41,400 | | | 229.5 | 47 | 4 | 200 | 140 | 170 | 12 | | | | | 20 | | | | | 40 | 24 | 8 | 27 | 4 |
| VX01- GF | 400,500,600 | 41,400 | | | 249 | 46 | 4 | 215 | 170 | 185 | 12 | | | | | 23.2 | | | | | 42 | 28 | 8 | 31 | 11 |
| VX01- GF | 800,K00,K20 | 64,100 | 390 | | 62 | 4 | 270 | 210 | 235 | 15 | 56 | 58 | 32 | 10 | 35 | 24.5 | | | | | | | | | |
| VX02- GF | 5 | 22,400 | 412 | | 76 | 4 | 340 | 240 | 285 | 19 | 66 | 70 | 42 | 12 | 45 | 43.5 | | | | | | | | | |
| VX02- GF | 10,15,20 | 20,200 | 0.4kW 相当 | | 225 | 35 | 4 | 170 | 140 | 150 | 10 | 17 | 28 | 16 | 5 | 18 | | | | | 28 | 19 | 6 | 21.5 | 3 |
| VX02- GF | 25,30 | 20,800 | | | 241.5 | 47 | 4 | 200 | 140 | 170 | 12 | 20 | | | | | | | | | 40 | 24 | 8 | 27 | 4 |
| VX02- GF | 40,45,50 | 23,500 | | 262 | 46 | 4 | 215 | 170 | 185 | 12 | 23.2 | 42 | | | | | 28 | 8 | 31 | 10.5 | | | | | |
| VX02- GF | 60 | 29,800 | | 310 | 62 | 4 | 270 | 210 | 235 | 15 | 28 | 58 | | | | | 32 | 10 | 35 | 20.5 | | | | | |
| VX02- GF | 80,100 | 29,800 | | 451 | 76 | 4 | 340 | 240 | 285 | 19 | 74.2 | 70 | | | | | 42 | 12 | 45 | 43 | | | | | |
| VX02- GF | 120,160,200 | 35,100 | | 496.5 | 90 | 5 | 390 | 280 | 330 | 19 | 81.2 | 82 | | | | | 55 | 16 | 59 | 70 | | | | | |
| VX02- GF | 240,300 | 60,200 | | 0.75kW 相当 | 284.5 | 46 | 4 | 215 | 170 | 185 | 12 | 23.2 | | | | | 28 | 19 | 6 | 21.5 | 42 | 28 | 8 | 31 | 11 |
| VX02- GF | 400,500 | 60,200 | 358.5 | | 62 | 4 | 270 | 210 | 235 | 15 | 28 | 58 | 32 | 10 | 35 | 23 | | | | | | | | | |
| VX02- GF | 600 | 60,200 | 380.5 | | 76 | 4 | 340 | 240 | 285 | 19 | 38 | 70 | 42 | 12 | 45 | 40.5 | | | | | | | | | |
| VX02- GF | 800,K00,K20 | 80,400 | 531 | | 90 | 5 | 390 | 280 | 330 | 19 | 87.5 | 82 | 55 | 16 | 59 | 79 | | | | | | | | | |
| VX04- GF | 5 | 29,800 | 0.75kW 相当 | | 284.5 | 46 | 4 | 215 | 170 | 185 | 12 | 23.2 | 28 | 19 | 6 | 21.5 | | | | | 42 | 28 | 8 | 31 | 11 |
| VX04- GF | 10 | 27,800 | | | 358.5 | 62 | 4 | 270 | 210 | 235 | 15 | 28 | | | | | | | | | 58 | 32 | 10 | 35 | 23 |
| VX04- GF | 15,20 | 27,800 | | | 380.5 | 76 | 4 | 340 | 240 | 285 | 19 | 38 | | | | | | | | | 70 | 42 | 12 | 45 | 40.5 |
| VX04- GF | 25,30 | 28,200 | | 496.5 | 90 | 5 | 390 | 280 | 330 | 19 | 81.2 | 82 | | | | | 55 | 16 | 59 | 70 | | | | | |
| VX04- GF | 40,45,50 | 31,000 | | 0.75kW 相当 | 284.5 | 46 | 4 | 215 | 170 | 185 | 12 | 23.2 | | | | | 28 | 19 | 6 | 21.5 | 42 | 28 | 8 | 31 | 11 |
| VX04- GF | 60,80 | 42,900 | | | 358.5 | 62 | 4 | 270 | 210 | 235 | 15 | 28 | | | | | | | | | 58 | 32 | 10 | 35 | 23 |
| VX04- GF | 100 | 47,100 | | | 380.5 | 76 | 4 | 340 | 240 | 285 | 19 | 38 | | | | | | | | | 70 | 42 | 12 | 45 | 40.5 |
| VX04- GF | 120,160 | 57,200 | 496.5 | | 90 | 5 | 390 | 280 | 330 | 19 | 81.2 | 82 | 55 | 16 | 59 | 70 | | | | | | | | | |
| VX04- GF | 200 | 57,200 | 0.75kW 相当 | | 284.5 | 46 | 4 | 215 | 170 | 185 | 12 | 23.2 | 28 | 19 | 6 | 21.5 | | | | | 42 | 28 | 8 | 31 | 11 |
| VX04- GF | 240,300 | 90,600 | | | 358.5 | 62 | 4 | 270 | 210 | 235 | 15 | 28 | | | | | | | | | 58 | 32 | 10 | 35 | 23 |
| VX04- GF | 400,500,600 | 90,600 | | | 380.5 | 76 | 4 | 340 | 240 | 285 | 19 | 38 | | | | | | | | | 70 | 42 | 12 | 45 | 40.5 |
| VX04- GF | 800,K00,K20 | 164,700 | | 496.5 | 90 | 5 | 390 | 280 | 330 | 19 | 81.2 | 82 | | | | | 55 | 16 | 59 | 70 | | | | | |
| VX08- GF | 5 | 46,600 | | 0.75kW 相当 | 284.5 | 46 | 4 | 215 | 170 | 185 | 12 | 23.2 | | | | | 28 | 19 | 6 | 21.5 | 42 | 28 | 8 | 31 | 11 |
| VX08- GF | 10,15,20 | 43,600 | | | 358.5 | 62 | 4 | 270 | 210 | 235 | 15 | 28 | | | | | | | | | 58 | 32 | 10 | 35 | 23 |
| VX08- GF | 25,30 | 45,100 | | | 380.5 | 76 | 4 | 340 | 240 | 285 | 19 | 38 | | | | | | | | | 70 | 42 | 12 | 45 | 40.5 |
| VX08- GF | 40,45,50 | 60,200 | 496.5 | | 90 | 5 | 390 | 280 | 330 | 19 | 81.2 | 82 | 55 | 16 | 59 | 70 | | | | | | | | | |
| VX08- GF | 60 | 64,700 | 0.75kW 相当 | | 284.5 | 46 | 4 | 215 | 170 | 185 | 12 | 23.2 | 28 | 19 | 6 | 21.5 | | | | | 42 | 28 | 8 | 31 | 11 |
| VX08- GF | 80,100 | 77,000 | | | 358.5 | 62 | 4 | 270 | 210 | 235 | 15 | 28 | | | | | | | | | 58 | 32 | 10 | 35 | 23 |
| VX08- GF | 120 | 81,000 | | | 380.5 | 76 | 4 | 340 | 240 | 285 | 19 | 38 | | | | | | | | | 70 | 42 | 12 | 45 | 40.5 |
| VX08- GF | 160 | 81,000 | | 496.5 | 90 | 5 | 390 | 280 | 330 | 19 | 81.2 | 82 | | | | | 55 | 16 | 59 | 70 | | | | | |
| VX08- GF | 200 | 81,000 | | 0.75kW 相当 | 284.5 | 46 | 4 | 215 | 170 | 185 | 12 | 23.2 | | | | | 28 | 19 | 6 | 21.5 | 42 | 28 | 8 | 31 | 11 |
| VX08- GF | 240,300,400,500 | 154,600 | | | 358.5 | 62 | 4 | 270 | 210 | 235 | 15 | 28 | | | | | | | | | 58 | 32 | 10 | 35 | 23 |

空圧・油圧・真空

直動システム・関連連

ロボット・FA

制御・検出・計測

5 駆動・回転

軸受・素材・機械

動力伝達・伝動

搬送・運搬

ポンプ・送風機・粉体

工場設備・環境

